



Merian Gold Project

Environmental and Social Impact Assessment
Public Meetings - August 2011



Welcome & Introductions

Purpose of Public Meeting:

- Inform interested groups about the Project
- Describe Merian Project
- Listen to your potential concerns

Ground Rules

- Mutual respect, courtesy, and patience.
- Please help maintain an atmosphere where everyone feels comfortable and welcome.
- Please don't interrupt anyone while they are speaking.
- Please remain quiet so everyone can hear; please leave the room for side discussions.
- Please turn off cell phones or set them to vibrate.
- Raise hands to ask a question.

Agenda

1. Project Description
2. The Environmental and Social Impact Assessment (ESIA)
3. Questions and Answers
4. Closing Remarks

Who Are Surgold?

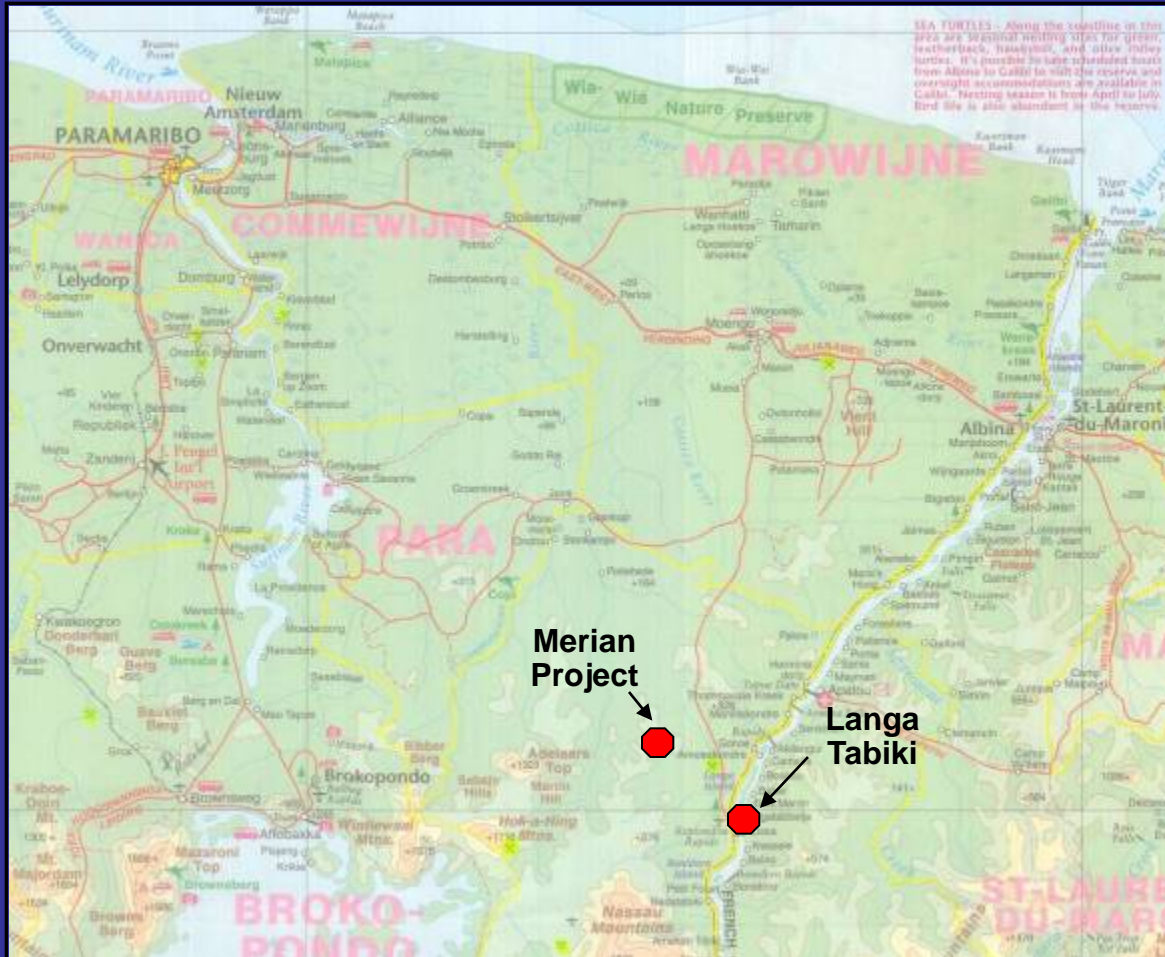
- A company held by Newmont & Alcoa with Newmont as the manager
- Exploring in Merian area since 2004
- No gold production yet – awaiting agreement with state



What is the Merian Project?

Project Location

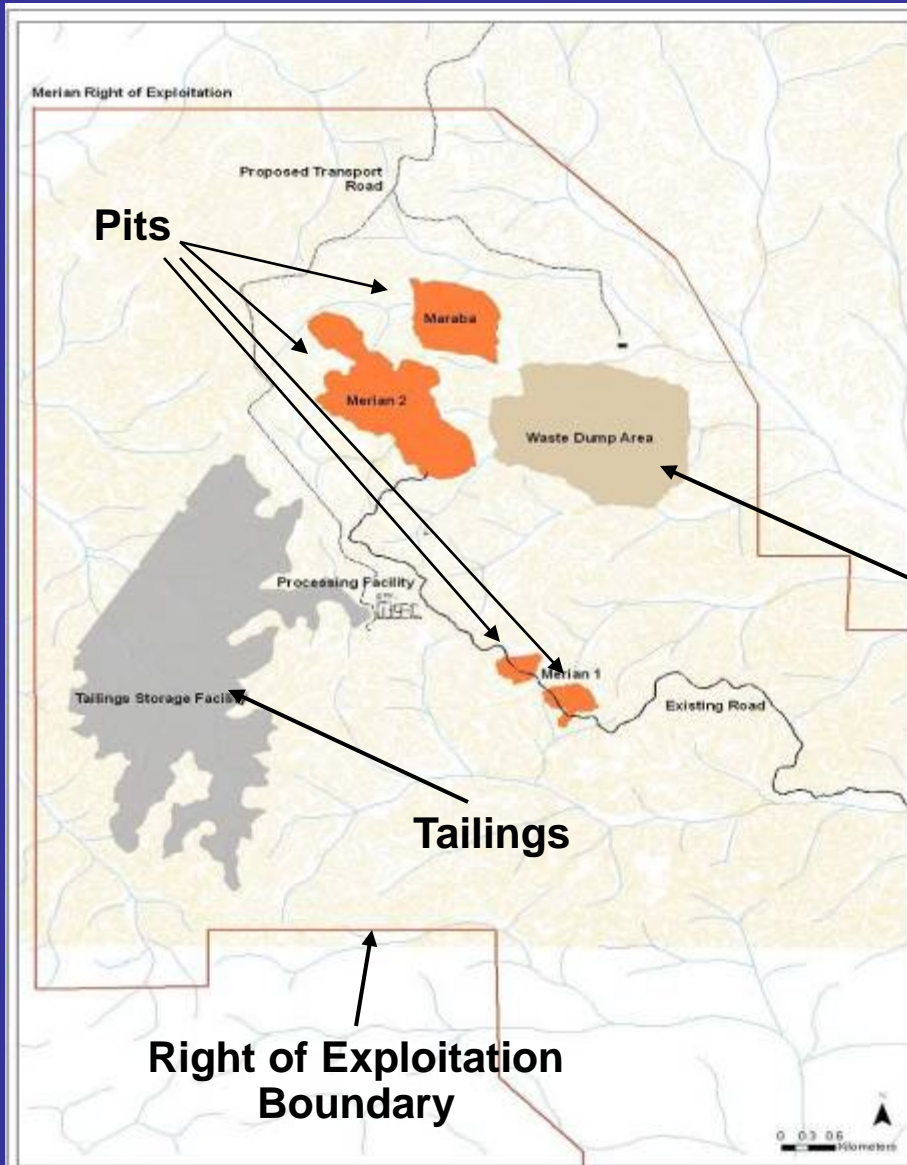
- Approximately 66km South of Moengo
- Between Commewijne and Marowijne Rivers
- Langa Tabiki is the nearest village (approximately 10km from site)
- Approximately 40km north of Nassau Mountains



Project Components

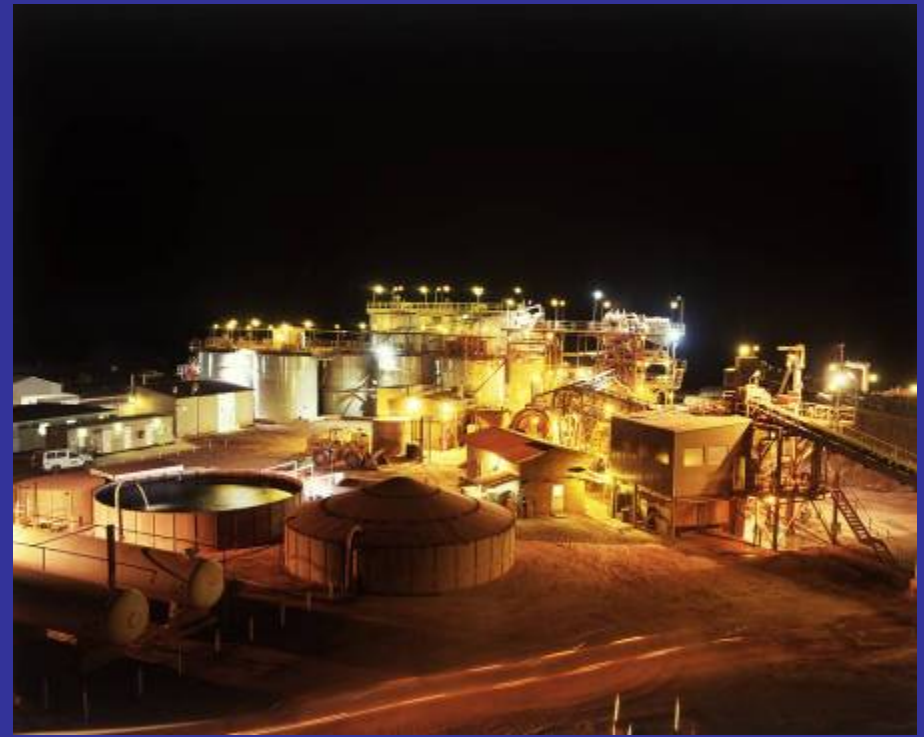
The Project will need the following components:

- 3 – 4 open pits
- Processing Plant
- Waste rock storage
- Tailing storage
- Power generation
- Water Treatment facilities
- Offices and accommodation



Example Open Pit





Examples of Processing

Above: example of gold processing plant

Left: example of leach tanks

Example Machinery





Waste from the Project

Above: example of waste rock storage

Below: example of tailings facility

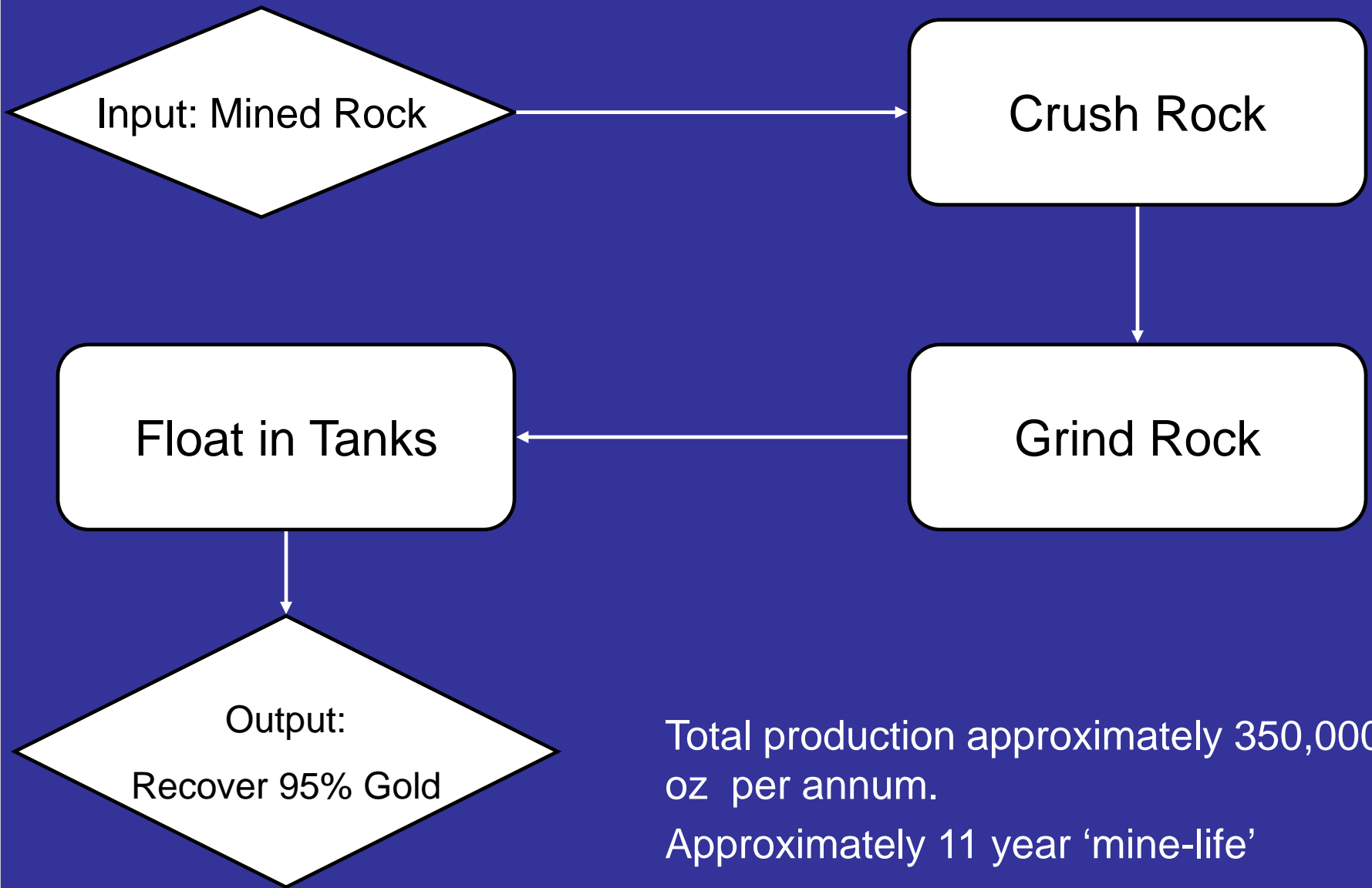


Project employees:

- Approximately 1,500-2,000 during construction (including temporary contractor for construction)
- Approximately 900 during operations

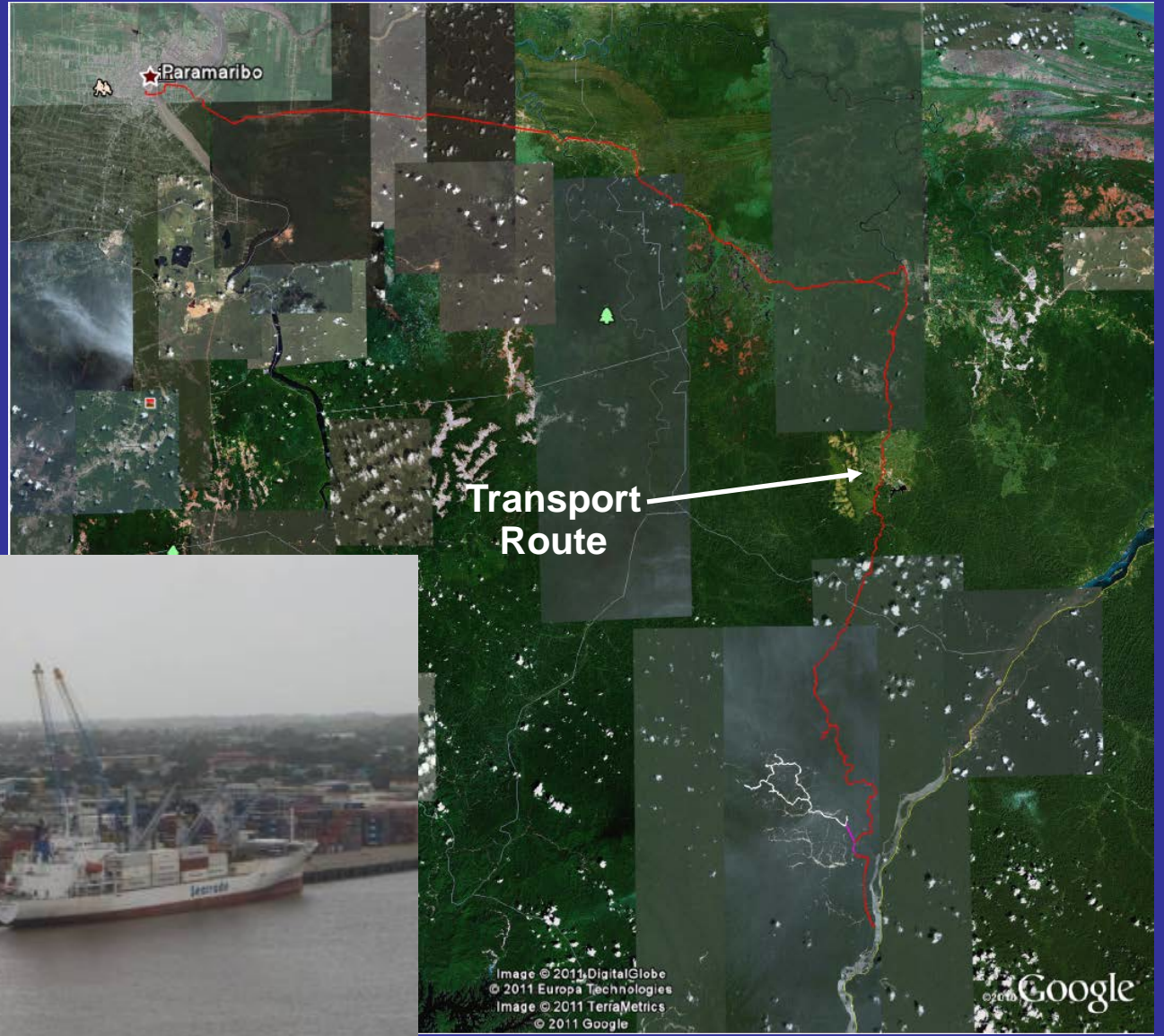


Current Merian Exploration Camp



Total production approximately 350,000 oz per annum.

Approximately 11 year 'mine-life'



Mine Closure

- Protect environment & public health & safety – ensure physical and geological stability of land
- Sustainable use of site after closure – continuous reclamation & rehabilitations of land back into forest
- Minimize negative effects after closure to environment and community - monitoring
- Overall positive impact to wildlife, animals and people - sustainable social and economic benefits

Example Mine Closure - Indonesia



APRIL 2003

Example Mine Closure - Indonesia



May 2008 – Five years later

Example Mine Closure - Indonesia





Example Reclamation of Mine - Indonesia





Example Reclamation of Waste Rock - Indonesia



Environmental and Social Impact Assessment

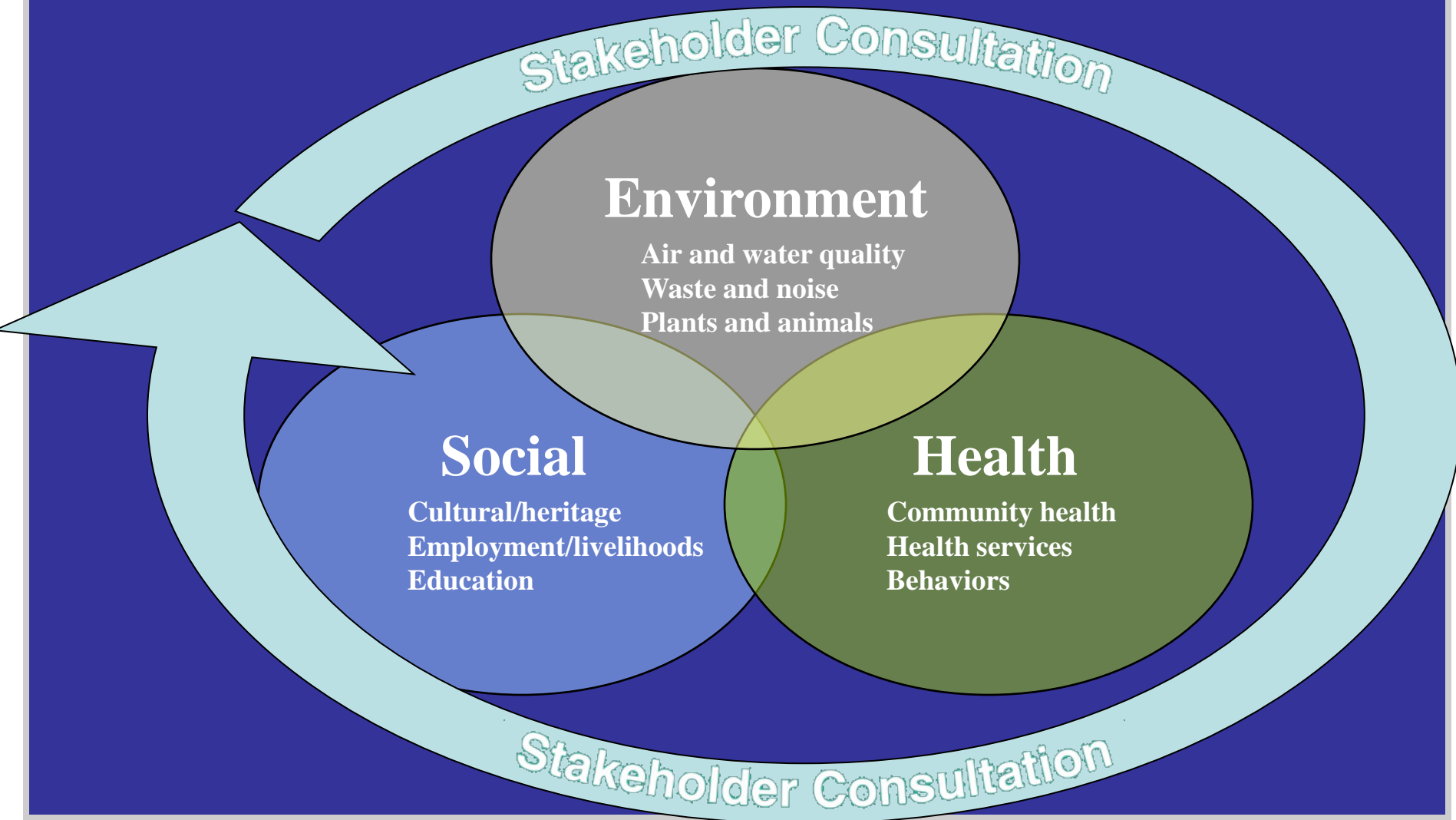
What is an ESIA?

A process to determine the effects of a Project on people and the environment.

Promote positive impacts & reduce or avoid negative impacts



Four Components of an ESIA



Who will do the ESIA?

Environmental Resources Management (ERM) will conduct the ESIA.



- Independent, international consultant specialising in ESIA's
- ERM is an international environmental consulting firm with over 30 years of experience in impact assessment
- 40 countries, 3,000 employees - global expertise & local context
- A team of environmental, social, and health specialists with experience in mine Projects
- Approach to ESIA involves partnership with local specialists, including the specialists here today from ESS and others

ERM's Role

- Surgold has contracted ERM to prepare the ESIA for the Proposed Merian Project
- ERM is separate from Surgold, they have commissioned ERM to:
 - Act as independent consultant to conduct the ESIA
 - Recommend measures to promote the positive and minimize the negative effects of the Project
 - Facilitate public involvement - encourage and enable interested people or organizations to participate in this process

What are the requirements for an ESIA?

ERM will follow best practice guidelines for the ESIA:

- Surinamese National Institute of Environment and Development in Suriname (NIMOS) guidelines
- International Standards (International Finance Corporation Performance Standards)



This means the ESIA will:

- Involves public input throughout
- Documents current environmental and social conditions
- Predicts future conditions
- Recommends measures for maximizing positive and minimizing negative effects

What does an ESIA involve?

- Scoping – Identify likely impacts and studies required
- Impact Assessment
 - undertake studies to understand existing conditions & predict potential changes.
 - Design ways to promote positive & reduce negative impacts
- Monitoring and Evaluation



Environmental Studies

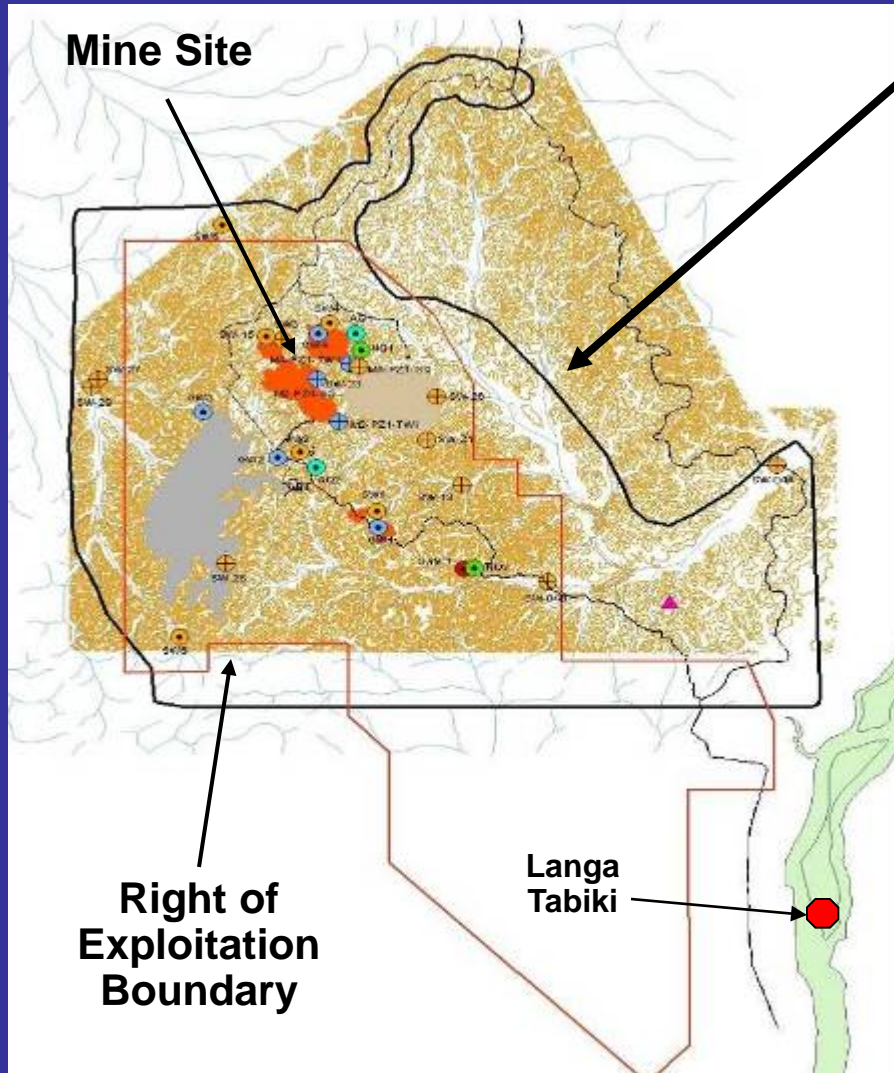
- Groundwater Study
- Air Quality Studies
- Noise Study
- Plant Study
- Animal Study
- Soil Study
- Traffic Study
- Surface Water Quality Study



Environmental Study Area

The area that may be affected by changes to the environment caused by the Project

Studies – August 2011 to February 2012



Social and Health Studies

In the villages that could be affected

- Survey of households that may be impacted
- Interviews and groups discussions in impacted villages
- Health studies

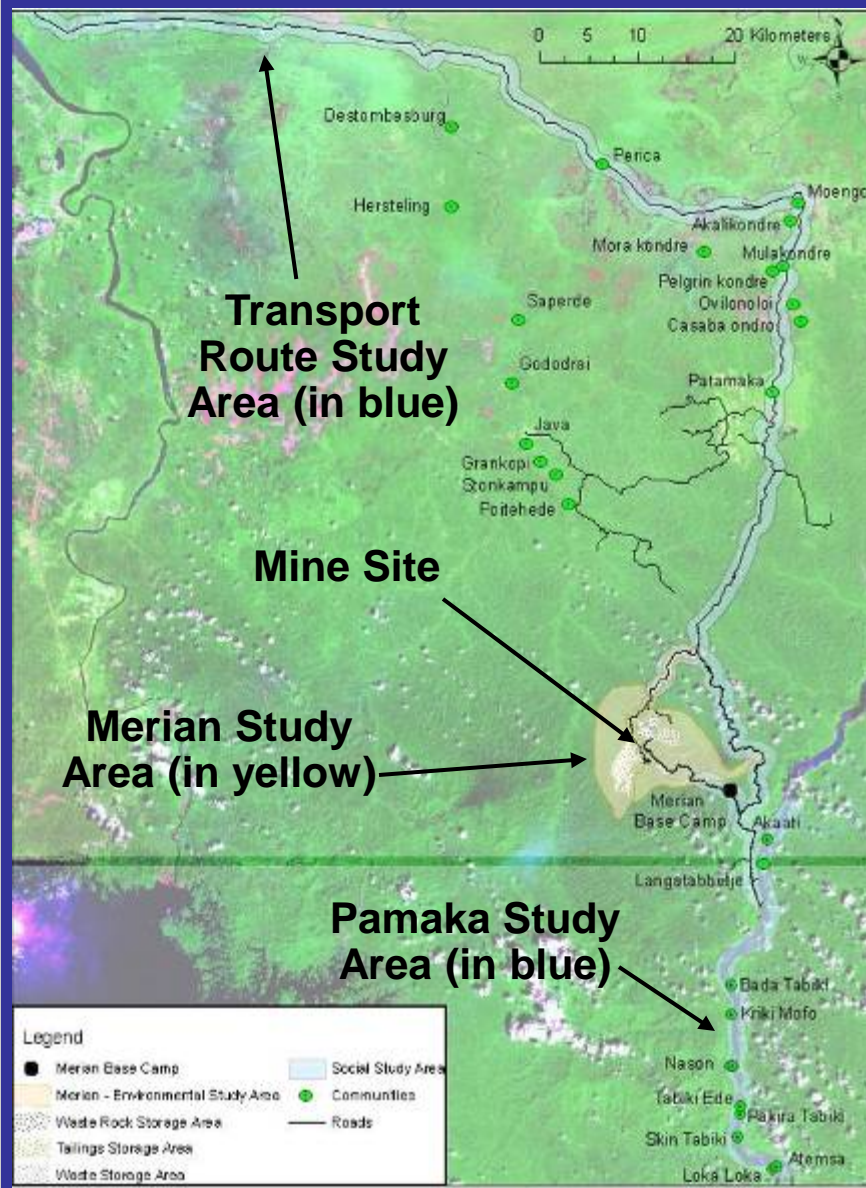


September 2011 onwards

Social and Health Study Area

The area that may be affected by changes to the conditions in local villages:

- area surrounding mine site
- area along road
- Pamaka villages



Public Consultation

- Public input is a critical component of the ESIA process
 - Solicit input from you throughout the ESIA process
 - Ongoing communication via mail, radio, email, and newspapers

Consultation Principles:

Inclusive, culturally sensitive,
transparent



Review & Publication of ESIA Findings

- Distribute ESIA report to NIMOS, government & other interested groups
- Hold meetings to present impacts, the assessment & mitigation / management measures
- Receive public comments on the impacts & mitigation



ESIA Terms of Reference

To Describe the purpose and structure of the ESIA

Available from:

- Surgold Office - Paramaribo (Suriname Straat)
- NIMOS office – Paramaribo
- Surgold Camp - Merian

Overall ESIA Schedule

Date	ESIA Process/Activity
August, 2011	Public meeting
August 2011-February 2012	Baseline Studies
February -March, 2012	Impact Assessment Studies
March - April 2012	Prepare Draft ESIA report & hold public meeting to disclose findings
May 2010	Finalize ESIA report
June 2012	Deliver Final ESIA

Next Steps

- Social & Cultural Heritage studies
- Environmental studies
- Will keep interested groups informed
- Disclosure meeting around April 2012

Project Contacts and Information

ERM

For ESIA questions or comments: Salomon Emanuels

Phone: (0) 8553324

Email: salomonemanuels@yahoo.com
/ merian.esia@erm.com



Surgold

For Project related questions or comments:

Project point of contact: Wendell Asadang

Phone: (0) 8638655 / 7172880

Email: wendel.asadang@newmont.com

Closing Remarks

- ESIA must be complete before exploitation right awarded by government
- ESIA is crucial to Project development
- You will have the opportunity to participate
- The ESIA results will be presented to you so you can comment.



Thank you for your
time!

Questions?

